

## Eco Preparation 2000 mm Work Table with Upstand - disassembled

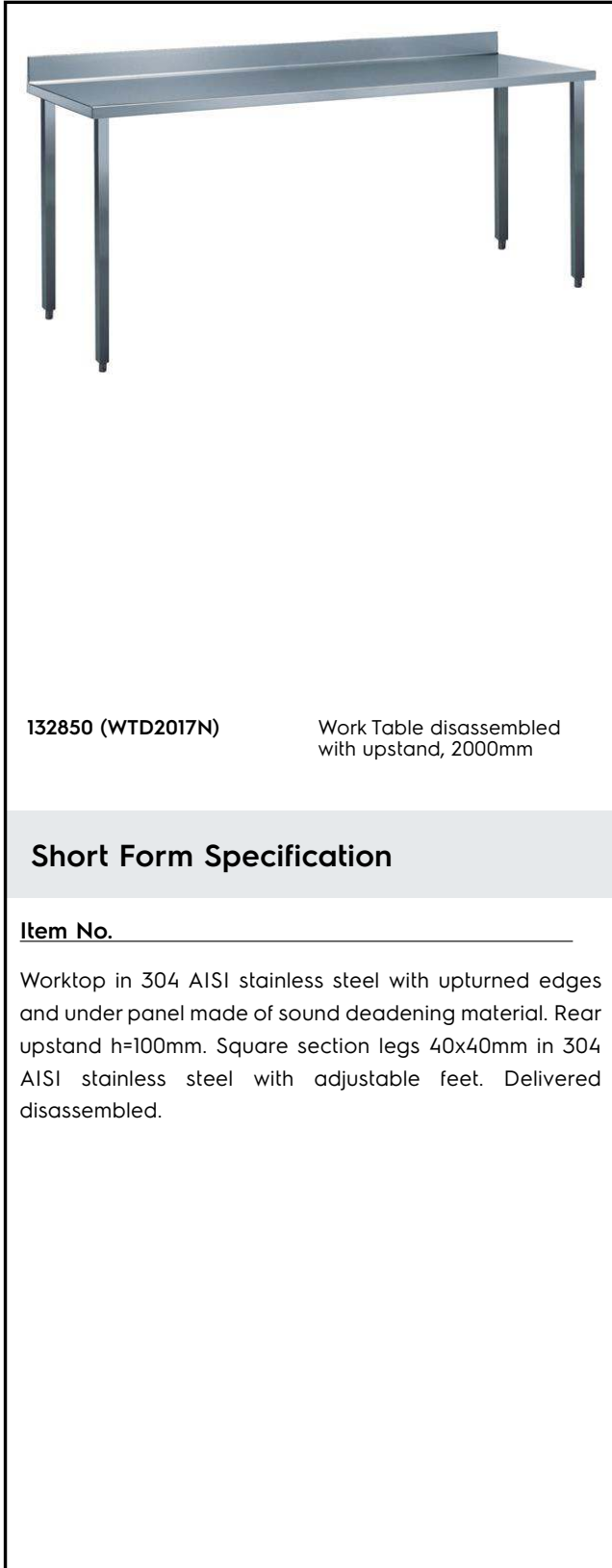
ITEM # \_\_\_\_\_

MODEL # \_\_\_\_\_

NAME # \_\_\_\_\_

SIS # \_\_\_\_\_

AIA # \_\_\_\_\_



132850 (WTD2017N)

 Work Table disassembled  
 with upstand, 2000mm

### Short Form Specification

Item No. \_\_\_\_\_

Worktop in 304 AISI stainless steel with upturned edges and under panel made of sound deadening material. Rear upstand h=100mm. Square section legs 40x40mm in 304 AISI stainless steel with adjustable feet. Delivered disassembled.

### Main Features

- The table can be ordered with the drawer of 400 mm or 600 mm (optional accessory): thanks to the design of the drawer, additional drawers can be added to the first single drawer to create chest of 2, 3 or 4 drawers based on customer's needs.
- Sturdiness, stability and reliability of table accurately tested.

### Construction

- Delivered in knock-down package.
- Constructed entirely in stainless steel to offer maximum durability.
- Wide range of taps are available to suit every need.

### Optional Accessories

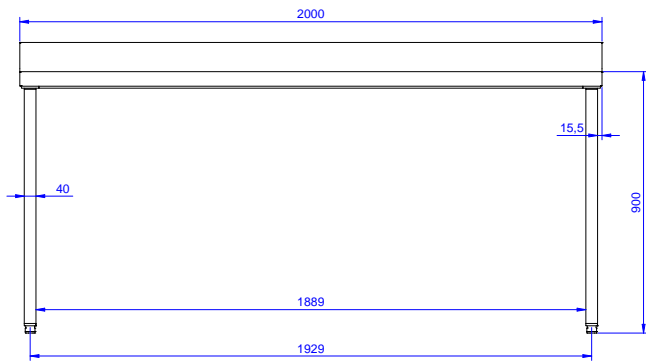
- Lower shelf for 2000mm tables and sinks PNC 855149
- Set of 4 wheels (2 with brake) d. 100mm for tables and sinks (total height on wheels= 993 mm) PNC 855150
- 3-sided underframe for 2000mm tables PNC 855156

APPROVAL: \_\_\_\_\_

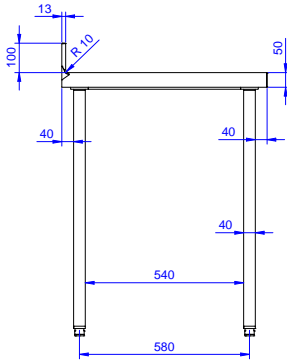
## Key Information:

|                              |         |
|------------------------------|---------|
| External dimensions, Width:  | 2000 mm |
| 132850 (WTD2017N)            |         |
| External dimensions, Depth:  | 700 mm  |
| External dimensions, Height: | 900 mm  |
| Worktop thickness:           | 50 mm   |
| Worktop/Shelf radius:        | 90°     |
| Net weight:                  | 63 kg   |

Front



Side



Top

